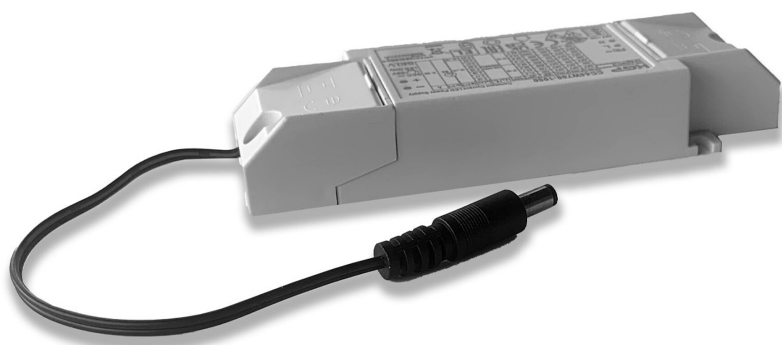


# Panel Comfort

LED DRIVER 220-240V CC 800mA 27-45VDC ON/OFF

Article no.: 719247



ohne

Control signal

IP20

Degree of protection (IP)

800

mA

Output current range

## TENDER TEXT

incl. connection cable for Panel Gen5 Comfort BILTON LEDON Technology Panel Comfort Article 719247 The power supply can be used for a output voltage range of 27-45 V. Constant current 800 mA. The supply voltage of the power supply is 198 - 264 V and has a IP20 protection type and protection class II . Control signal ohne . Dimensions (L x W x H): 137.5 mm x 44.0 mm x 23.0 mm



# Panel Comfort

LED DRIVER 220-240V CC 800mA 27-45VDC ON/OFF

Article no.: 719247



## MECHANICAL DATA

Housing	Kunststoffgehäuse
Width [mm]	44.0
Length [mm]	137.5
Height [mm]	23.0
Model	Static
Control signal	ohne
With overheating protection	nein
Suitable for outdoor use	nein
Degree of protection (IP)	IP20
Core cross section [mm <sup>2</sup> ]	0,5 - 1,5

## ELECTRICAL DATA

Protection class	II
Control signal	ohne
With overheating protection	nein
Input voltage range [V]	198 - 264
Output voltage range [V]	27 - 45
Output current range [mA]	800
Overload protection	Yes
Standby power consumption (solstandby) [W]	0.5
Suitable for constant current	Yes
Suitable for constant voltage	nein
Suitable for DC-voltage (primary side)	Yes
No dim function	Yes

## CONNECTION

Core cross section [mm <sup>2</sup> ]	0,5 - 1,5
---------------------------------------	-----------

## TEMPERATURE TECHNICAL DATA

Ambient/storage temperature [°C]	- 40 ... + 85
Ambient temperature during operating [°C]	- 20 ... + 45

## PACKAGING INFORMATION

EAN	4250716950670
Article no.	719247
Customs tariff number	85044083
Net width [mm]	44.0
Net height [mm]	23
Net length [mm]	137.5
State of origin	CN

# Panel Comfort

**LED DRIVER 220-240V CC 800mA 27-45VDC ON/OFF**

Article no.: 719247



**SAFETY INFORMATION:** Read the safety and installation instructions carefully and completely before commissioning. The operating instructions can be found at: [www.better-light.at](http://www.better-light.at)

**DISCLAIMER OF WARRANTY:** The technical information corresponds to the status at the time of printing and have been worked out to the best of our knowledge. However, errors and printing errors are reserved. Make sure that you always use the latest version of the data sheets. The latest data sheet can be found at: [www.better-light.at](http://www.better-light.at)