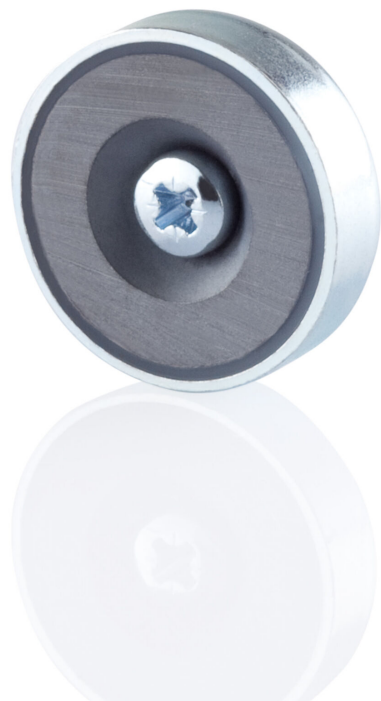


Magnet steel BLine Select XTM1

BLine Select XTM1 mounting magnet steel for aluminium profiles D20x6mm

Article no.: 170458



20.0

mm

Length

6.0

mm

Height

20.0

mm

Width

TENDER TEXT

Mounting magnet for aluminium profiles, Magnet made of steel incl. magnet, D 20 x 6mm Accessories Magnet steel BLine Select XTM1 Article 170458 The accessories Magnet steel BLine Select XTM1 consists of Stahl with a Silber surface and it is easy to assemble. Dimension (L x W x H): 20.0 mm x 20.0 mm x 6.0 mm

Magnet steel BLine Select XTM1

BLine Select XTM1 mounting magnet steel for aluminium profiles D20x6mm

Article no.: 170458



MECHANICAL DATA

| | |
|-------------------|---------------|
| Material | Stahl |
| Width [mm] | 20.0 |
| Length [mm] | 20.0 |
| Height [mm] | 6.0 |
| Diameter [mm] | 20 |
| Colour | Silber |
| Type of accessory | Montageplatte |
| Transparent | nein |
| Accessory | yes |

TEMPERATURE TECHNICAL DATA

| | |
|----------------------|------|
| Thermal conductivity | 11.5 |
|----------------------|------|

PACKAGING INFORMATION

| | |
|-----------------------|---------------|
| EAN | 4250716909692 |
| Article no. | 170458 |
| Net weight [g] | 7.2 |
| Gross weight [g] | 10.2 |
| Gross width [mm] | 40.0 |
| Gross height [mm] | 6.0 |
| Gross length [mm] | 80.0 |
| Customs tariff number | 76042990 |
| Net width [mm] | 20.0 |
| Net height [mm] | 6 |
| Net length [mm] | 20 |
| State of origin | DE |

SAFETY INFORMATION: Read the safety and installation instructions carefully and completely before commissioning. The operating instructions can be found at: www.better-light.at

DISCLAIMER OF WARRANTY: The technical information corresponds to the status at the time of printing and have been worked out to the best of our knowledge. However, errors and printing errors are reserved. Make sure that you always use the latest version of the data sheets. The latest data sheet can be found at: www.better-light.at