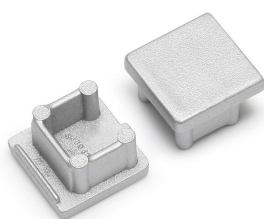


# Endcap BLine Select TT012

**BLine Select TT0012B End cap set silver for profile TT12 and cover TX11/TX12**

Article no.: 171245



7.0

mm

Length

Aluminium

Colour

12

mm

Net height

---

## TENDER TEXT

End cap set for TT12 + cover flat ABS L7 x W12 x H12 mm installation dim. 2mm with hole 3.5x2mm BILTON LEDON Technology Endcap BLine Select TT012 Article 171245 The Endcap BLine Select TT012 consists of Kunststoff and has a Aluminium . Easy installation via into the profile. Dimension (L x W x H): 7.0 mm x x 12 mm

---

# Endcap BLine Select TT012

**BLine Select TT0012B End cap set silver for profile TT12 and cover TX11/TX12**

Article no.: 171245



## MECHANICAL DATA

|                  |                       |
|------------------|-----------------------|
| Material         | Kunststoff            |
| Width [mm]       | 12.0                  |
| Length [mm]      | 7.0                   |
| Colour           | Aluminium             |
| Model            | Endkappe              |
| Suitable for     | U - Profil            |
| Surfacetreatment | anodisiert / eloxiert |

## PACKAGING INFORMATION

|                       |               |
|-----------------------|---------------|
| EAN                   | 4250716942231 |
| Article no.           | 171245        |
| Net weight [g]        | 2             |
| Gross weight [g]      | 2             |
| Gross width [mm]      | 12.0          |
| Gross height [mm]     | 12.0          |
| Gross length [mm]     | 7.0           |
| Customs tariff number | 94059200      |
| Net width [mm]        | 12.0          |
| Net height [mm]       | 12            |
| Net length [mm]       | 7             |
| State of origin       | PL            |

**SAFETY INFORMATION:** Read the safety and installation instructions carefully and completely before commissioning. The operating instructions can be found at: [www.better-light.at](http://www.better-light.at)

**DISCLAIMER OF WARRANTY:** The technical information corresponds to the status at the time of printing and have been worked out to the best of our knowledge. However, errors and printing errors are reserved. Make sure that you always use the latest version of the data sheets. The latest data sheet can be found at: [www.better-light.at](http://www.better-light.at)