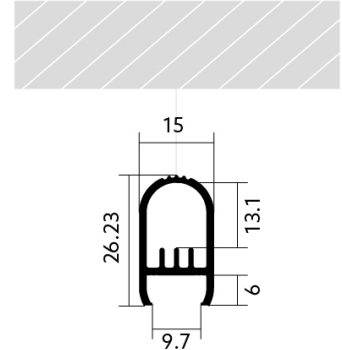


# Wardrobe profile BLine Select CT06

BLine Select CT06 LED wardrobe profile alu silver 28 W/m B26.2xH15xL3000 mm

Article no.: 170282



Material



Power consumption



Height



Width

## TENDER TEXT

Wardrobe profile CT06 aluminum silver 28W/m L3000xW26.25xH15mm BILTON LEDON Technology Wardrobe profile BLine Select CT06 Article 170282 The Wardrobe profile BLine Select CT06 can be combined with all covers from the CT family. The profile is made of Aluminium with an finish and has a power consumption of up to 28 W. Dimensions (L x W x H): 3000.0 mm x 26.2 mm x 15.0 mm Please note that cutting tolerances of +/- 2mm may occur.

# Wardrobe profile BLine Select CT06

**BLine Select CT06 LED wardrobe profile alu silver 28 W/m B26.2xH15xL3000 mm**

Article no.: 170282



## MECHANICAL DATA

Material	Aluminium
Width [mm]	26.2
Length [mm]	3000.0
Height [mm]	15.0
Mounting method	sonstige
Colour	lichtgrau
Power consumption [W]	28
Material quality	sonstige
Surfacetreatment	anodisiert / eloxiert

## TEMPERATURE TECHNICAL DATA

Power consumption [W]	28
Thermal conductivity	23.4

## PACKAGING INFORMATION

EAN	4250716913033
Article no.	170282
Net weight [g]	484.5
Gross weight [g]	484.5
Gross width [mm]	26.2
Gross height [mm]	15.0
Gross length [mm]	3000.0
Customs tariff number	94054239
Net width [mm]	26.2
Net height [mm]	15
Net length [mm]	3000
State of origin	DE

## NECESSARY ACCESSORIES

Article	Article no.
Endcap CT006	170437
Support steel CT006-AF	170438
Centre support steel CT006-MT	170439

**SAFETY INFORMATION:** Read the safety and installation instructions carefully and completely before commissioning. The operating instructions can be found at: [www.better-light.at](http://www.better-light.at)

**DISCLAIMER OF WARRANTY:** The technical information corresponds to the status at the time of printing and have been worked out to the best of our knowledge. However, errors and printing errors are reserved. Make sure that you always use the latest version of the data sheets. The latest data sheet can be found at: [www.better-light.at](http://www.better-light.at)