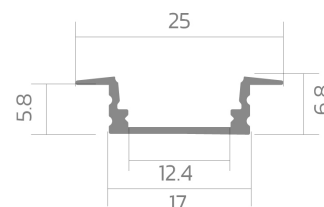
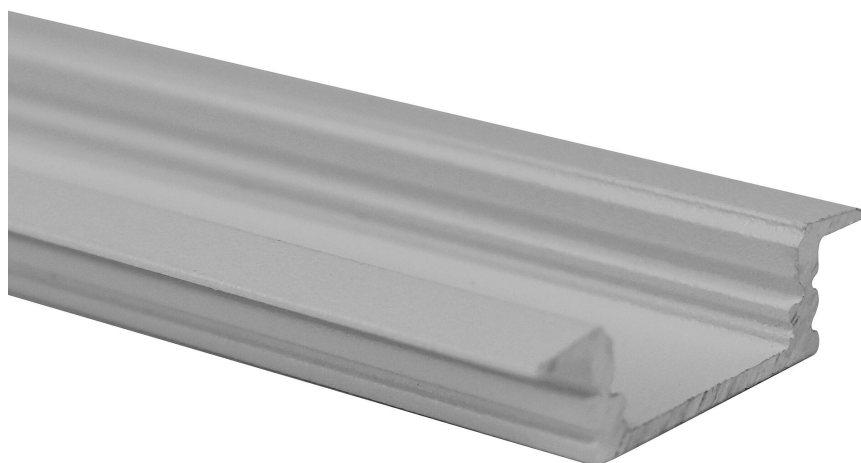


Recessed profile BLine P-S-IN01

BLine P-S-IN01 LED built-in profile Alu silver 12W/m W25 x H6.8 x L2000 mm

Article no.: 171744



Material



Power consumption



Height



Width

TENDER TEXT

Installation profile made of silver anodized aluminum Power consumption 12W/m, W 25 x H 6.8 x L 2000 mm BILTON LEDON Technology Recessed profile BLine P-S-IN01 Article 171744 The Recessed profile BLine P-S-IN01 can be combined with all covers from the BLine-S family. The profile is made of Aluminium with an Silber anodisiert/eloxiert finish and has a power consumption of up to 12 W. Dimensions (L x W x H): 2000.0 mm x 25.0 mm x 6.8 mm Please note that cutting tolerances of +/- 2mm may occur.

TOP-FEATURES

- //_ Profile available in white, black and silver
- //_ Easy installation thanks to customised combinations
- //_ Suitable for LED strips up to 12 W
- //_ Covers available in satin, black and transparent



Recessed profile BLine P-S-IN01

BLine P-S-IN01 LED built-in profile Alu silver 12W/m W25 x H6.8 x L2000 mm

Article no.: 171744



MECHANICAL DATA

| | |
|-----------------------|-----------------------|
| Material | Aluminium |
| Width [mm] | 25.0 |
| Length [mm] | 2000.0 |
| Height [mm] | 6.8 |
| Mounting method | Einbau |
| Colour | Silber |
| Power consumption [W] | 12 |
| Surfacetreatment | anodisiert / eloxiert |

TEMPERATURE TECHNICAL DATA

| | |
|-----------------------|----|
| Power consumption [W] | 12 |
|-----------------------|----|

PACKAGING INFORMATION

| | |
|-----------------------|---------------|
| EAN | 4250716946932 |
| Article no. | 171744 |
| Net weight [g] | 230 |
| Gross weight [g] | 24900 |
| Gross width [mm] | 170.0 |
| Gross height [mm] | 170.0 |
| Gross length [mm] | 2050.0 |
| Customs tariff number | 94059900 |
| Net width [mm] | 25.0 |
| Net height [mm] | 6.8 |
| Net length [mm] | 2000 |
| State of origin | CN |

* Our aluminum profiles, plastic profiles, and associated accessories are intended exclusively for use in LED lighting, especially LED strips. They serve as integral components of luminaires and are designed for this purpose. Any other use, especially any misuse outside of LED lighting, is beyond our responsibility.

We assume no liability for damages or consequential costs resulting from improper use of our products.

NECESSARY ACCESSORIES

| | |
|---|---------------|
| Article | Article no. |
| BLine C-S-01 cover transparent flat 2000mm for profile | 171764 |

Recessed profile BLine P-S-IN01

BLine P-S-IN01 LED built-in profile Alu silver 12W/m W25 x H6.8 x L2000 mm

Article no.: 171744



BLine M-S-01 mounting clip Spring steel 171777

**BLine C-S-01 cover satined flat 3000mm for profile171765
P-S-IN/ON/COR 01**

SAFETY INFORMATION: Read the safety and installation instructions carefully and completely before commissioning. The operating instructions can be found at: www.better-light.at

DISCLAIMER OF WARRANTY: The technical information corresponds to the status at the time of printing and have been worked out to the best of our knowledge. However, errors and printing errors are reserved. Make sure that you always use the latest version of the data sheets. The latest data sheet can be found at: www.better-light.at