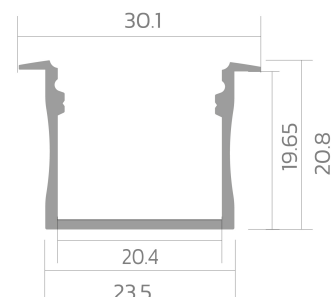
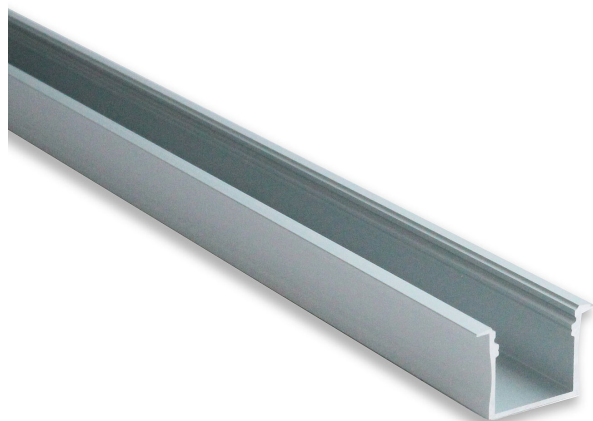


# Recessed profile BLine P-M-IN01

BLine P-M-IN01 LED built-in profile Alu silver 29W/m B30.1 x H20.8x L2000 mm

Article no.: 171879



Material



Power consumption



Height



Width

## TENDER TEXT

Installation profile made of silver anodized aluminum Power consumption 29W/m, W30.1 x H 20.8 x L 2000 mm BILTON LEDON Technology Recessed profile BLine P-M-IN01 Article 171879 The Recessed profile BLine P-M-IN01 can be combined with the cover C-M-01. The profile is made of Aluminium with an Silber anodisiert/eloxiert finish and has a power consumption of up to 29 W. Dimensions (L x W x H): 2000.0 mm x 30.1 mm x 20.8 mm Please note that cutting tolerances of +/- 2mm may occur.

## TOP-FEATURES

- //\_\_ Profile available in white, black and silver
- //\_\_ Easy installation thanks to customised combinations
- //\_\_ Suitable for LED strips up to 29 W
- //\_\_ Covers available in satin, black and transparent



# Recessed profile BLine P-M-IN01

**BLine P-M-IN01 LED built-in profile Alu silver 29W/m B30.1 x H20.8x L2000 mm**

Article no.: 171879



## MECHANICAL DATA

Material	Aluminium
Width [mm]	30.1
Length [mm]	2000.0
Height [mm]	20.8
Mounting method	Einbau
Colour	Silber
Power consumption [W]	29
Surfacetreatment	anodisiert / eloxiert

## TEMPERATURE TECHNICAL DATA

Power consumption [W]	29
-----------------------	----

## PACKAGING INFORMATION

EAN	4250716951301
Article no.	171879
Net weight [g]	600
Gross weight [g]	26900
Gross width [mm]	170.0
Gross height [mm]	170.0
Gross length [mm]	2050.0
Customs tariff number	94059900
Net width [mm]	30.1
Net height [mm]	20.8
Net length [mm]	2000
State of origin	CN

\* Our aluminum profiles, plastic profiles, and associated accessories are intended exclusively for use in LED lighting, especially LED strips. They serve as integral components of luminaires and are designed for this purpose. Any other use, especially any misuse outside of LED lighting, is beyond our responsibility.

We assume no liability for damages or consequential costs resulting from improper use of our products.

## NECESSARY ACCESSORIES

Article	Article no.
---------	-------------

<b>BLine E-M-IN01 Endkappe silber für Profil P-M-IN01 u. Abd. C-M-01 ohne Bohrung</b>	<b>171905</b>
---	---------------

# Recessed profile BLine P-M-IN01

**BLine P-M-IN01 LED built-in profile Alu silver 29W/m B30.1 x H20.8x L2000 mm**

Article no.: 171879



**BLine E-M-IN01 Endkappe silber für Profil P-M-IN01 u. Abd. C-M-01 mit Bohrung 171914**

**BLine M-M-01 mounting clip Spring steel for profile P-M-IN01 with drill 171923**

**BLine C-M-01 cover satin flat 2000mm for profiles P-M-IN01 171897**

**BLine C-M-01 cover transparent flat 2000mm for profiles P-M-IN01 171898**

**BLine C-M-01 cover black flat 2000mm for profile P-M-IN01 172052**

**SAFETY INFORMATION:** Read the safety and installation instructions carefully and completely before commissioning. The operating instructions can be found at: [www.better-light.at](http://www.better-light.at)

**DISCLAIMER OF WARRANTY:** The technical information corresponds to the status at the time of printing and have been worked out to the best of our knowledge. However, errors and printing errors are reserved. Make sure that you always use the latest version of the data sheets. The latest data sheet can be found at: [www.better-light.at](http://www.better-light.at)