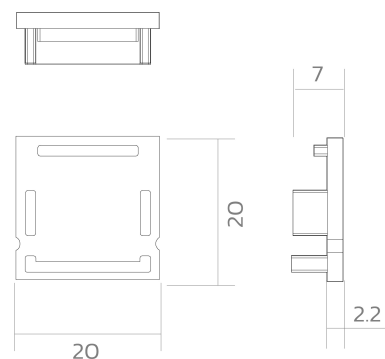
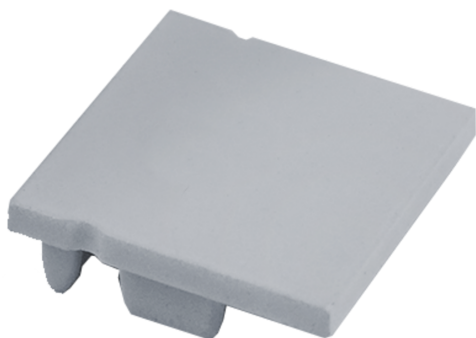


# End cap BLine-E-M-ON02

BLine E-M-ON02 Endcap silver for profile P-M-ON02 and cover C-M-02 no drill

Article no.: 171911



---

## TENDER TEXT

Endcap ABS silver (without cable hole) for surface mounted profile P-M-ON02 and cover C-M-02 BILTON LEDON Technology End cap BLine-E-M-ON02 Article 171911 The End cap BLine-E-M-ON02 consists of Kunststoff with a Silber surface. Cable hole: ohne Dimensions (L x W x H): 7.2 mm x 20.0 mm x 20.0 mm

---



# End cap BLine-E-M-ON02

**BLine E-M-ON02 Endcap silver for profile P-M-ON02 and cover C-M-02 no drill**

Article no.: 171911



## MECHANICAL DATA

|              |              |
|--------------|--------------|
| Material     | Kunststoff   |
| Width [mm]   | 20.0         |
| Length [mm]  | 7.2          |
| Height [mm]  | 20.0         |
| Colour       | Silber       |
| Model        | Endkappe     |
| Suitable for | Aufbauprofil |
| Mit Loch     | ohne         |

## PACKAGING INFORMATION

|                       |               |
|-----------------------|---------------|
| EAN                   | 4250716952735 |
| Article no.           | 171911        |
| Net weight [g]        | 1             |
| Gross weight [g]      | 45            |
| Gross width [mm]      | 100.0         |
| Gross height [mm]     | 100.0         |
| Gross length [mm]     | 30.0          |
| Customs tariff number | 39169050      |
| Net width [mm]        | 20.0          |
| Net height [mm]       | 20            |
| Net length [mm]       | 7.2           |
| State of origin       | CN            |

\* Our aluminum profiles, plastic profiles, and associated accessories are intended exclusively for use in LED lighting, especially LED strips. They serve as integral components of luminaires and are designed for this purpose. Any other use, especially any misuse outside of LED lighting, is beyond our responsibility.

We assume no liability for damages or consequential costs resulting from improper use of our products.

**SAFETY INFORMATION:** Read the safety and installation instructions carefully and completely before commissioning. The operating instructions can be found at: [www.better-light.at](http://www.better-light.at)

**DISCLAIMER OF WARRANTY:** The technical information corresponds to the status at the time of printing and have been worked out to the best of our knowledge. However, errors and printing errors are reserved. Make sure that you always use the latest version of the data sheets. The latest data sheet can be found at: [www.better-light.at](http://www.better-light.at)