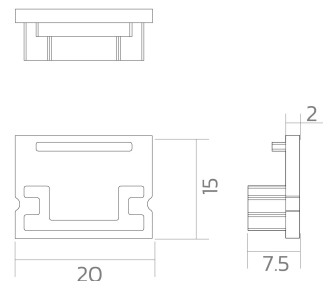
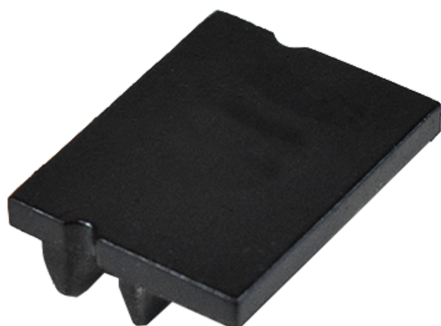


# End cap BLine-E-M-ON01

**BLine E-M-ON01 Endcap black for profile P-M-ON01 and cover C-M-02 no drill**

Article no.: 171909



---

## TENDER TEXT

Endcap ABS black (without cable hole) for surface mounted profile P-M-ON01 and cover C-M-02 BILTON LEDON Technology End cap BLine-E-M-ON01 Article 171909 The End cap BLine-E-M-ON01 consists of Kunststoff with a Black surface. Cable hole: ohne Dimensions (L x W x H): 7.5 mm x 20.0 mm x 15.0 mm

---



# End cap BLine-E-M-ON01

**BLine E-M-ON01 Endcap black for profile P-M-ON01 and cover C-M-02 no drill**

Article no.: 171909



## MECHANICAL DATA

Material	Kunststoff
Width [mm]	20.0
Length [mm]	7.5
Height [mm]	15.0
Colour	Black
Model	Endkappe
Suitable for	Aufbauprofil
Mit Loch	ohne

## PACKAGING INFORMATION

EAN	4250716952711
Article no.	171909
Gross width [mm]	100.0
Gross height [mm]	100.0
Gross length [mm]	30.0
Customs tariff number	39169050
Net width [mm]	20.0
Net height [mm]	15
Net length [mm]	7.5
State of origin	CN

\* Our aluminum profiles, plastic profiles, and associated accessories are intended exclusively for use in LED lighting, especially LED strips. They serve as integral components of luminaires and are designed for this purpose. Any other use, especially any misuse outside of LED lighting, is beyond our responsibility.

We assume no liability for damages or consequential costs resulting from improper use of our products.

**SAFETY INFORMATION:** Read the safety and installation instructions carefully and completely before commissioning. The operating instructions can be found at: [www.better-light.at](http://www.better-light.at)

**DISCLAIMER OF WARRANTY:** The technical information corresponds to the status at the time of printing and have been worked out to the best of our knowledge. However, errors and printing errors are reserved. Make sure that you always use the latest version of the data sheets. The latest data sheet can be found at: [www.better-light.at](http://www.better-light.at)