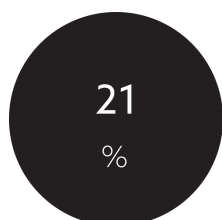
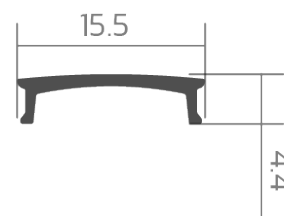
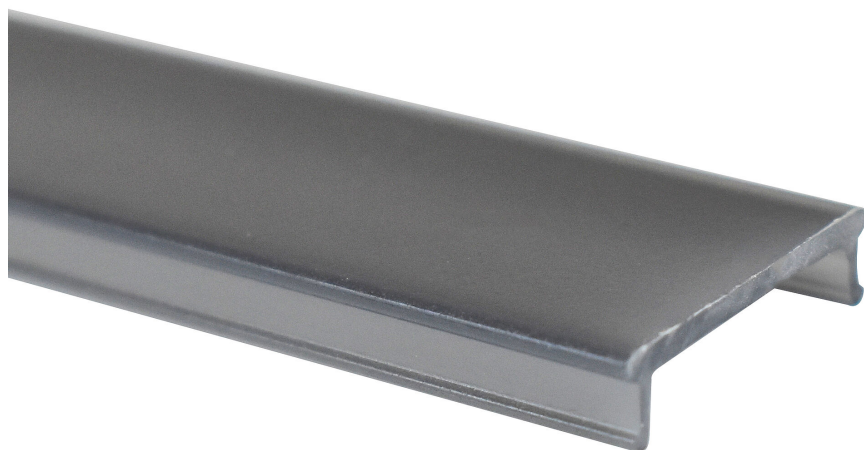


Abdeckung BLine C-S black

BLine C-S-01 cover black flat 3000mm for profile P-S-IN/ON/COR 01

Article no.: 171766



Bore/transmittance



Net height

TENDER TEXT

Cover PC black 21% for profiles P-S-IN/ON/COR 01, Width 15.5 x Hight 4.4 x Length 3000 mm BILTON LEDON Technology Abdeckung BLine C-S black Article 171766 The Abdeckung BLine C-S black can be combined with all profiles from the BLine-M. The cover consists of Kunststoff in sonstige with a transmittance degree of 21 %. Cover can be easily pressed into the profile. Dimension (L x W x H): 3000.0 mm x 15.5 mm x 4.4 mm Please note that cutting tolerances of +/- 2mm may occur.

TOP-FEATURES

//__ Covers available in black, satined and transparent

//__ Black and satined cover available to 20 metres/roll



Abdeckung BLine C-S black

BLine C-S-01 cover black flat 3000mm for profile P-S-IN/ON/COR 01

Article no.: 171766



MECHANICAL DATA

Material	Kunststoff
Width [mm]	15.5
Length [mm]	3000.0
Height [mm]	4.4
Mounting method	sonstige
Colour	Black
Model	Lengthwise cover
Suitable for	Einbau, Aufbau, Eck
Inflammability class of insulation material acc. with UL94	V2
Surfacetreatment	sonstige

TEMPERATURE TECHNICAL DATA

Bore/transmittance [%]	21
------------------------	----

PACKAGING INFORMATION

EAN	4250716947168
Article no.	171766
Net weight [g]	75
Gross weight [g]	26600
Gross width [mm]	170.0
Gross height [mm]	170.0
Gross length [mm]	3050.0
Customs tariff number	94059900
Net width [mm]	15.5
Net height [mm]	4.4
Net length [mm]	3000
State of origin	CN

* Our aluminum profiles, plastic profiles, and associated accessories are intended exclusively for use in LED lighting, especially LED strips. They serve as integral components of luminaires and are designed for this purpose. Any other use, especially any misuse outside of LED lighting, is beyond our responsibility.

We assume no liability for damages or consequential costs resulting from improper use of our products.

SAFETY INFORMATION: Read the safety and installation instructions carefully and completely before commissioning. The operating instructions can be found at: www.better-light.at

DISCLAIMER OF WARRANTY: The technical information corresponds to the status at the time of printing and have been worked out to the best of our knowledge. However, errors and printing errors are reserved. Make sure that you always use the latest version of the data sheets. The latest data sheet can be found at: www.better-light.at