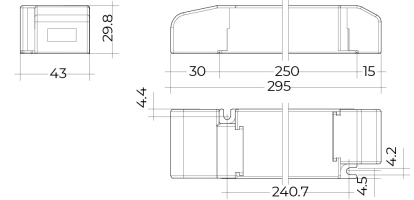


# Drive Dim Casambi

BLDRIVE DIM 100W 24V IP20 Power Supply Casambi

Article no.: 172047



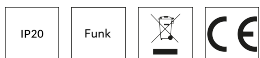
Output power range



Degree of protection (IP)

## TENDER TEXT

Dimmable Casambi power supply, max. output power 100W, maximum input voltage 220-240VAC, output voltage 24V, SELV, protection class IP20. Protection class I, Casambi, dimensions L x W x H = 295 x 43 x 29.8 mm BILTON LEDON Technology power supply Drive Dim Casambi Article 172047 The power supply can be used up to 100 W output power and output voltage. The supply voltage of the power supply is 198 - 264 V and has a IP20 protection class and protection class II . Dimension (L x W x H): 295.0 mm x 43.0 mm x 29.8 mm



# Drive Dim Casambi

## BLDRIVE DIM 100W 24V IP20 Power Supply Casambi

Article no.: 172047



### MECHANICAL DATA

Housing	Kunststoffgehäuse
Width [mm]	43.0
Length [mm]	295.0
Height [mm]	29.8
Colour	White
Control signal	Funk
With overheating protection	Yes
Suitable for outdoor use	nein
Degree of protection (IP)	IP20
Core cross section [mm <sup>2</sup> ]	0,2 - 1,5

### ELECTRICAL DATA

Protection class	II
Voltage type	AC / DC
Control signal	Funk
With overheating protection	Yes
Input voltage range [V]	198 - 264
Output power range [W]	100
Frequency supply voltage (range) [Hz]	50 - 60
Overload protection	Yes
Standby power consumption (solstandby) [W]	0.37
Suitable for constant voltage	Yes
Suitable for DC-voltage (primary side)	Yes

### CONNECTION

Core cross section [mm <sup>2</sup> ]	0,2 - 1,5
---------------------------------------	-----------

### TEMPERATURE TECHNICAL DATA

Ambient/storage temperature [°C]	- 40 ... + 80
Lifespan at 20 °C [h]	50000

### PACKAGING INFORMATION

EAN	4250716951424
Article no.	172047
Net weight [g]	255
Gross weight [g]	255
Customs tariff number	85044083
Net width [mm]	295.0
Net height [mm]	29.8
Net length [mm]	43

# Drive Dim Casambi

**BLDRIVE DIM 100W 24V IP20 Power Supply Casambi**

Article no.: 172047



State of origin

CN

---

SAFETY INFORMATION: Read the safety and installation instructions carefully and completely before commissioning. The operating instructions can be found at: [www.better-light.at](http://www.better-light.at)

DISCLAIMER OF WARRANTY: The technical information corresponds to the status at the time of printing and have been worked out to the best of our knowledge. However, errors and printing errors are reserved. Make sure that you always use the latest version of the data sheets. The latest data sheet can be found at: [www.better-light.at](http://www.better-light.at)