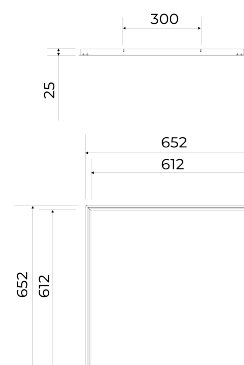
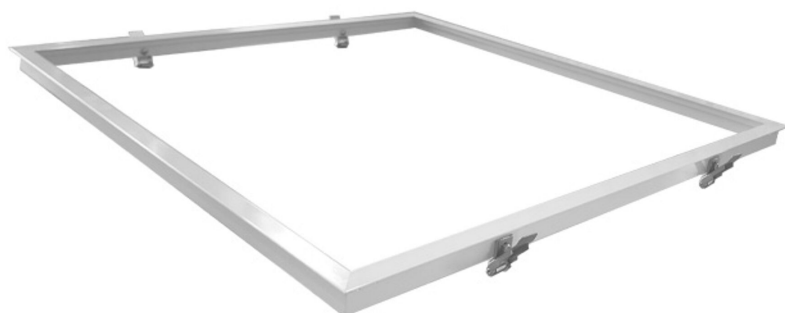


Installation frame

BL recessed mounting kit for panel 620x620 and 623x623 aluminium white RAL 9003

Article no.: 719202



Material



Mounting method



Colour

TENDER TEXT

BILTON LEDON Technology Installation frame Article 719202 The Installation frame consists of Aluminium in the color White . Einbau of the panel. The square version uses 4 springs (arranged in 2×2) and the rectangular version uses 6 springs (arranged in 3×2), suitable for ceiling thicknesses of 15–30 mm. Dimensions (L x W x H): 652.0 mm x 652.0 mm x 25.0 mm



Installation frame

BL recessed mounting kit for panel 620x620 and 623x623 aluminium white RAL 9003

Article no.: 719202



MECHANICAL DATA

Material	Aluminium
Width [mm]	652.0
Length [mm]	652.0
Height [mm]	25.0
Mounting method	Einbau
Colour	White
Type of accessory	Einbaurahmen
Transparent	nein
Accessory	yes

PACKAGING INFORMATION

EAN	4250716949223
Article no.	719202
Net weight [g]	480
Gross weight [g]	28000
Gross width [mm]	350.0
Gross height [mm]	350.0
Gross length [mm]	740.0
Customs tariff number	94059900
Net width [mm]	652.0
Net height [mm]	25
Net length [mm]	652
State of origin	CN

SAFETY INFORMATION: Read the safety and installation instructions carefully and completely before commissioning. The operating instructions can be found at: www.better-light.at

DISCLAIMER OF WARRANTY: The technical information corresponds to the status at the time of printing and have been worked out to the best of our knowledge. However, errors and printing errors are reserved. Make sure that you always use the latest version of the data sheets. The latest data sheet can be found at: www.better-light.at