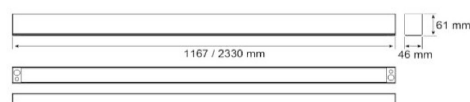
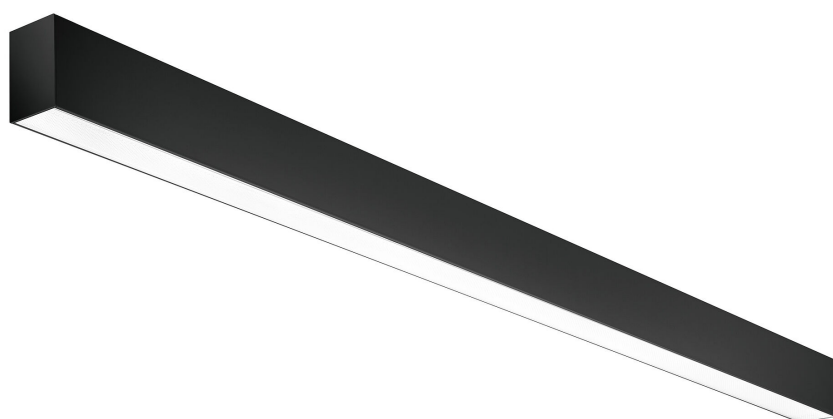


Linear Trend surface-mounted luminaire

BL Linear Trend surface-mounted luminaire 2330mm 10000lm 90W 110D 840 BK DALI

Article no.: 701028



2330.0

mm

Length

Aluminium

Material

4000

K

Colour temperature

yes

Flicker-free

TENDER TEXT

Linear surface-mounted luminaire, black aluminium housing, opal cover incl. DALI power supply unit, mounting clips and end caps, 10,000 lumens, 90W, 110° direct beam, CRI >80, 4,000 Kelvin, IP20, dimensions: L 2,330 x W 46 x H 61mm Linear Trend surface-mounted luminaire Article 701028 Linear LED luminaire with combined Plastic opal optics and direkt lighting; High-quality, Black coated profile made of Aluminium , without visible screws, ambient temperatures of -20 ... +40 °C with a service life of 50000 h , luminous flux 10000 lm, connected load 90 W, luminous efficacy 111 lm/W, colour rendering >80 , colour consistency SDCM3 , UGR

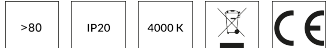
TOP-FEATURES

//__ Best light quality with precise glare control and homogeneous light distribution

//__ Available as surface-mounted or pendant light

//__ Light emission direkt

//__ Optics Plastic opal



Linear Trend surface-mounted luminaire

BL Linear Trend surface-mounted luminaire 2330mm 10000lm 90W 110D 840 BK DALI

Article no.: 701028



MECHANICAL DATA

Material	Aluminium
Colour housing	Black
Width [mm]	46.0
Length [mm]	2330.0
Height/depth [mm]	61
Mounting method	Aufbau
Lamp type	LED austauschbar
Type of fastening	Mounting brackets
Suitable for strip light configuration	yes
Material of the cover	Plastic opal
Degree of protection (IP)	IP20
With lamp	yes
Control gear included	yes
Unified Glare Ratio (UGR)	<28

ELECTRICAL DATA

Protection class	III
Voltage type	AC
Power factor	0,95
Nominal voltage [V]	220 - 240
Operating frequency [Hz]	50 / 60
Overall efficiency [lm/W]	111
Nennstrom [A]	0,391
Max. system power [W]	90
Power factor	0.95
Dimming DALI	yes
Flicker percent (< 165 Hz)	<3

LIGHT TECHNICAL DATA

Beam angle [°]	110
Colour rendering index CRI	>80
Light exit	direkt
Light distribution	symmetrical
Rated luminous flux according to IEC 62722-2-1 [lm]	10000
Colour temperature [K]	4000
Colour of light	White
Energy efficiency class provided exchangeable built-in lamp	F
Colour consistency (McAdam ellipse)	SDCM3
Flicker-free	yes

Linear Trend surface-mounted luminaire

BL Linear Trend surface-mounted luminaire 2330mm 10000lm 90W 110D 840 BK DALI

Article no.: 701028



TEMPERATURE TECHNICAL DATA

Ambient temperature during operating [°C]	- 20 ... + 40
Rated life time L80/B10 at 25 °C [h]	50000

PACKAGING INFORMATION

EAN	9009453014757
Article no.	701028
Net weight [g]	3580
Gross weight [g]	3920
Net width [mm]	46.0
Net height [mm]	61
Net length [mm]	2330
State of origin	CN

SAFETY INFORMATION: Read the safety and installation instructions carefully and completely before commissioning. The operating instructions can be found at: www.better-light.at

DISCLAIMER OF WARRANTY: The technical information corresponds to the status at the time of printing and have been worked out to the best of our knowledge. However, errors and printing errors are reserved. Make sure that you always use the latest version of the data sheets. The latest data sheet can be found at: www.better-light.at