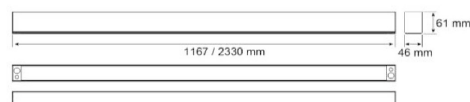
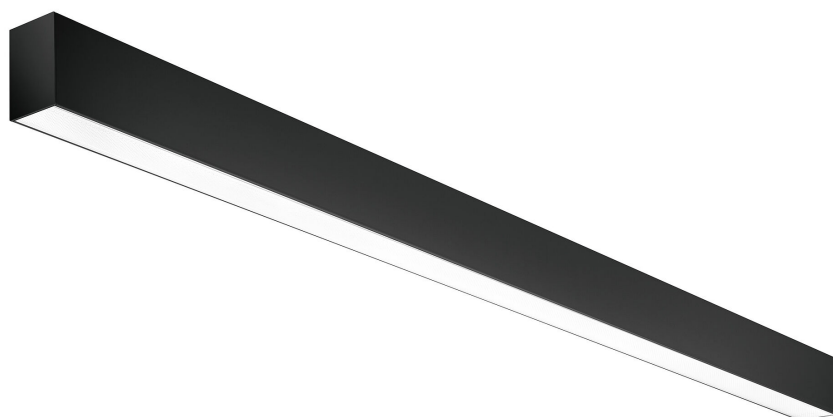


# Linear Trend surface-mounted luminaire

BL Linear Trend surface-mounted luminaire 1167mm 5000lm 45W 110D 840 black DALI

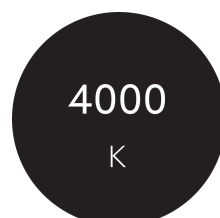
Article no.: 701023



Length



Material



Colour temperature



Flicker-free

## TENDER TEXT

Linear surface-mounted luminaire, black aluminium housing, opal cover incl. DALI power supply unit, mounting clips and end caps, 5,000 lumens, 45W, 110° direct beam, CRI >80, 4,000 Kelvin, IP20, dimensions: L 1,167 x W 46 x H 61mm Linear Trend surface-mounted luminaire Article 701023 Linear LED luminaire with combined Plastic opal optics and direkt lighting; High-quality, Black coated profile made of Aluminium, without visible screws, ambient temperatures of -20 ... +40 °C with a service life of 50000 h, luminous flux 5000 lm, connected load 45 W, luminous efficacy 111 lm/W, colour rendering >80, colour consistency SDCM3, UGR

## TOP-FEATURES

- //\_ Best light quality with precise glare control and homogeneous light distribution
- //\_ Available as surface-mounted or pendant light
- //\_ Light emission direkt
- //\_ Optics Plastic opal



# Linear Trend surface-mounted luminaire

BL Linear Trend surface-mounted luminaire 1167mm 5000lm 45W 110D 840 black DALI

Article no.: 701023



## MECHANICAL DATA

Material	Aluminium
Colour housing	Black
Width [mm]	46.0
Length [mm]	1167.0
Height/depth [mm]	61
Mounting method	Aufbau
Lamp type	LED austauschbar
Type of fastening	Mounting brackets
Suitable for strip light configuration	yes
Material of the cover	Plastic opal
Degree of protection (IP)	IP20
With lamp	yes
Control gear included	yes
Unified Glare Ratio (UGR)	<28

## ELECTRICAL DATA

Protection class	III
Voltage type	AC
Power factor	0,95
Nominal voltage [V]	220 - 240
Operating frequency [Hz]	50 / 60
Overall efficiency [lm/W]	111
Nennstrom [A]	0,196
Max. system power [W]	45
Power factor	0.95
Dimming DALI	yes
Flicker percent (< 165 Hz)	<3

## LIGHT TECHNICAL DATA

Beam angle [°]	110
Colour rendering index CRI	>80
Light exit	direkt
Light distribution	symmetrical
Rated luminous flux according to IEC 62722-2-1 [lm]	5000
Colour temperature [K]	4000
Colour of light	White
Energy efficiency class provided exchangeable built-in lamp	F
Colour consistency (McAdam ellipse)	SDCM3
Flicker-free	yes

# Linear Trend surface-mounted luminaire

**BL Linear Trend surface-mounted luminaire 1167mm 5000lm 45W 110D 840 black DALI**

Article no.: 701023



## TEMPERATURE TECHNICAL DATA

Ambient temperature during operating [°C]	- 20 ... + 40
Rated life time L80/B10 at 25 °C [h]	50000

## PACKAGING INFORMATION

EAN	9009453014566
Article no.	701023
Net weight [g]	1720
Gross weight [g]	1890
Net width [mm]	46.0
Net height [mm]	61
Net length [mm]	1167
State of origin	CN

SAFETY INFORMATION: Read the safety and installation instructions carefully and completely before commissioning. The operating instructions can be found at: [www.better-light.at](http://www.better-light.at)

DISCLAIMER OF WARRANTY: The technical information corresponds to the status at the time of printing and have been worked out to the best of our knowledge. However, errors and printing errors are reserved. Make sure that you always use the latest version of the data sheets. The latest data sheet can be found at: [www.better-light.at](http://www.better-light.at)