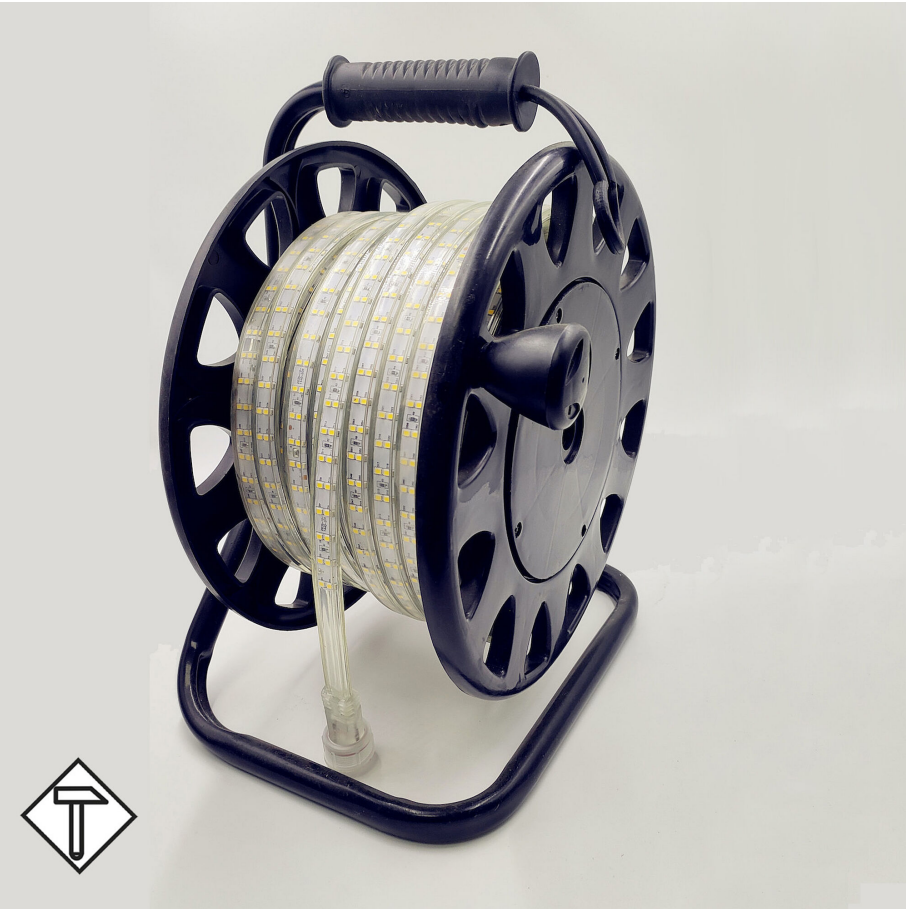


BL HVR light tube on cable drum

BL High Voltage lighth tube 765lm/m 230VAC 8W/m IP65 860 50m cable reel
Article no.: 171783



220 - 240

V

Input voltage range

75000

mm

Max. length

IP65

Degree of protection (IP)

6000

K

Colour temperature

TENDER TEXT

LED light tube High Voltage 765 lm/m single-sided illumination, 230VAC, 8W/m, 95.6 lm/W, IP65, CRI>80, 6000K, on a cable drum 50 meters LED module BL HVR light tube on cable drum Article 171783 LED light tube on a more portable cable drum for easy and quick unwinding. Using T-connectors, several light strips can be connected over a total length of 75000 mm; Supply voltage 230 V; lamp power 8.0 W, luminous flux 765 lm; IP65 Protection type; color temperature ###Attribut.6751###; Beam angle 120°; Dimensions light tube 15.0 mm x height 7 mm, on a spool; LEDs per meter 144 two rows, LED spacing 13.89 mm; Shock resistance

TOP-FEATURES

- //__ Space-saving and efficient to use thanks to the cable drum
- //__ UV-resistant, flame retardant class V1-V0
- //__ No external power supply required, connect directly to 230 V AC
- //__ Daylight , homogeneous illumination over the entire length
- //__ Using T-connectors, a length of up to 150 meters is possible



BL HVR light tube on cable drum

BL High Voltage lighth tube 765lm/m 230VAC 8W/m IP65 860 50m cable reel

Article no.: 171783



MECHANICAL DATA

Width [mm]	15.0
Length [mm]	50000.0
Height/depth [mm]	7
Mounting method	sonstige
Model	Schlauch
Self-adhesive	nein
Lamp type	LED nicht austauschbar
Distance [mm]	13.89
Distance relating to	LED zu LED
Degree of protection (IP)	IP65
With protective cover	yes
Length of particular segments [mm]	50000.0
Number of lamps per meter	144

ELECTRICAL DATA

Protection class	II
Voltage type	AC
Lamp voltage [V]	230
Input voltage range [V]	220 - 240
Lamp power per meter [W]	8.0
Overall efficiency [lm/W]	96
Max. system power [W]	8

LIGHT TECHNICAL DATA

Beam angle [°]	120
Colour rendering index CRI	>80
Colour temperature [K]	6000
Colour of light	White
Luminous flux per meter [lm]	765
Energy efficiency class of the built-in lamp	F
Colour consistency (McAdam ellipse)	SDCM5

CONNECTION

Number of poles	2
Max. length [mm]	75000

TEMPERATURE TECHNICAL DATA

Ambient/storage temperature [°C]	- 20 ... + 60
Ambient temperature during operating [°C]	- 20 ... + 45

BL HVR light tube on cable drum

BL High Voltage lighth tube 765lm/m 230VAC 8W/m IP65 860 50m cable reel

Article no.: 171783



PACKAGING INFORMATION

EAN	4250716947533
Article no.	171783
Net weight [g]	6000
Gross weight [g]	8700
Gross width [mm]	330.0
Gross height [mm]	445.0
Gross length [mm]	245.0
Customs tariff number	94059900
Net width [mm]	15.0
Net height [mm]	7
Net length [mm]	50000
State of origin	CN

* Information about the electrical and lighting technology measurements: Performance data measured after 1 min. at 25 °C ambient temperature and a light colour of 4,000 K (or RGB). These values can have a tolerance value of +/- 10% (or +/- 15 %at ECO / TWO / RGB / AIR). Module length at 24 V input voltage at the module and luminous flux drop 10% over the specified length.

NECESSARY ACCESSORIES

Article	Article no.
Cable 800W for LED Light tube	171742
Cable 1500W for LED Light tube	171743

SAFETY INFORMATION: Read the safety and installation instructions carefully and completely before commissioning. The operating instructions can be found at: www.better-light.at

DISCLAIMER OF WARRANTY: The technical information corresponds to the status at the time of printing and have been worked out to the best of our knowledge. However, errors and printing errors are reserved. Make sure that you always use the latest version of the data sheets. The latest data sheet can be found at: www.better-light.at