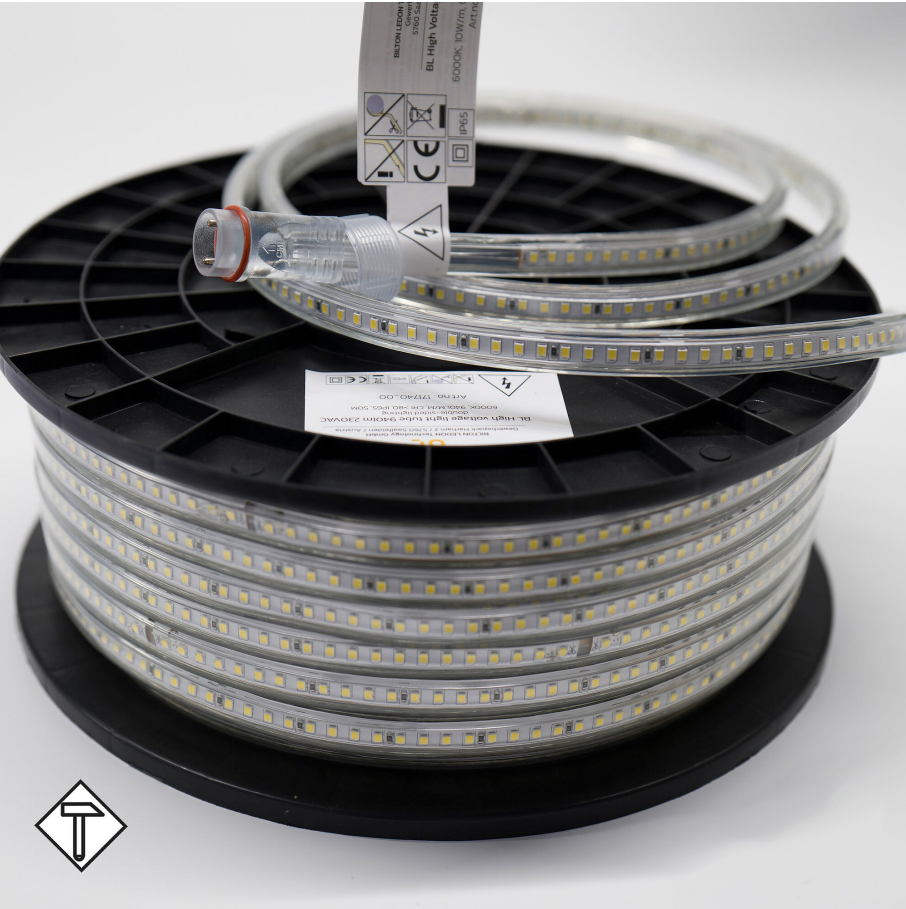


BL HVS light tube double-sided on a reel

BL High Voltage LED lighth tube 940lm/m 230VAC 10W/m IP65 860 25m on reel
Article no.: 171739



75000
mm

Max. length

IP65

Degree of protection (IP)

6000
K

Colour temperature

TENDER TEXT

LED lighth tube High Voltage 940 lm/m two-sided lighting, 230VAC, 10W/m, 94 lm/W, IP65, CRI>80, 6000K, on a reel, 25 meter LED module BL HVS light tube double-sided on a reel Article 171739 LED light tube with lighting on both sides on a practical spool for easy and quick unwinding. Using T-connectors, several light strips can be connected over a total length of 75000 mm, Supply voltage 230 V; lamp power 10.0 W, luminous flux 940 lm, IP65 Protection type, color temperature 6000 K, Beam angle 120°, Dimensions light tube 13.0 mm x height 7 mm, on a spool, LEDs per meter 288 single row, LED spacing 6.94 mm, Shock resistance IK07

TOP-FEATURES

- //__ Space-saving and efficiently stackable
- //__ UV-resistant, flame retardant class V1-V0
- //__ No external power supply required, connect directly to 230 V AC
- //__ Daylight , homogeneous illumination over the entire length and on both sides of the LED light strip
- //__ Using T-connectors, a length of up to 100 meters is possible



BL HVS light tube double-sided on a reel

BL High Voltage LED light tube 940lm/m 230VAC 10W/m IP65 860 25m on reel

Article no.: 171739



MECHANICAL DATA

Width [mm]	13.0
Length [mm]	25000.0
Height/depth [mm]	7
Mounting method	sonstige
Colour	White
Model	Schlauch
Type of control gear	nicht erforderlich
Self-adhesive	nein
Lamp type	LED nicht austauschbar
Impact strength	IK07
Distance [mm]	6.94
Distance relating to	LED zu LED
Degree of protection (IP)	IP65
With protective cover	yes
Length of particular segments [mm]	25000.0
Number of lamps per meter	288

ELECTRICAL DATA

Protection class	II
Voltage type	AC
Lamp voltage [V]	230
Lamp power per meter [W]	10.0
Overall efficiency [lm/W]	94

LIGHT TECHNICAL DATA

Beam angle [°]	120
Colour rendering index CRI	>80
Colour temperature [K]	6000
Colour of light	White
Luminous flux per meter [lm]	940
Energy efficiency class of the built-in lamp	F
Colour consistency (McAdam ellipse)	SDCM5

CONNECTION

Number of poles	2
Max. length [mm]	75000

TEMPERATURE TECHNICAL DATA

Ambient/storage temperature [°C]	- 20 ... + 60
Impact strength	IK07

BL HVS light tube double-sided on a reel

BL High Voltage LED light tube 940lm/m 230VAC 10W/m IP65 860 25m on reel

Article no.: 171739



Ambient temperature during operating [°C]	- 20... + 45
---	--------------

Rated life time L70/B50 at 25 °C [h]	36000
--------------------------------------	-------

PACKAGING INFORMATION

EAN	4250716946871
-----	---------------

Article no.	171739
-------------	--------

Net weight [g]	3000
----------------	------

Gross weight [g]	4500
------------------	------

Gross width [mm]	250.0
------------------	-------

Gross height [mm]	250.0
-------------------	-------

Gross length [mm]	135.0
-------------------	-------

Customs tariff number	94059900
-----------------------	----------

Net width [mm]	13.0
----------------	------

Net height [mm]	7
-----------------	---

Net length [mm]	25000
-----------------	-------

State of origin	CN
-----------------	----

* Information about the electrical and lighting technology measurements: Performance data measured after 1 min. at 25 °C ambient temperature and a light colour of 4,000 K (or RGB). These values can have a tolerance value of +/- 10% (or +/- 15 % at ECO / TWO / RGB / AIR). Module length at 24 V input voltage at the module and luminous flux drop 10% over the specified length.

NECESSARY ACCESSORIES

Article	Article no.
---------	-------------

Cable 800W for LED Light tube	171742
-------------------------------	--------

Cable 1500W for LED Light tube	171743
--------------------------------	--------

SAFETY INFORMATION: Read the safety and installation instructions carefully and completely before commissioning. The operating instructions can be found at: www.better-light.at

DISCLAIMER OF WARRANTY: The technical information corresponds to the status at the time of printing and have been worked out to the best of our knowledge. However, errors and printing errors are reserved. Make sure that you always use the latest version of the data sheets. The latest data sheet can be found at: www.better-light.at