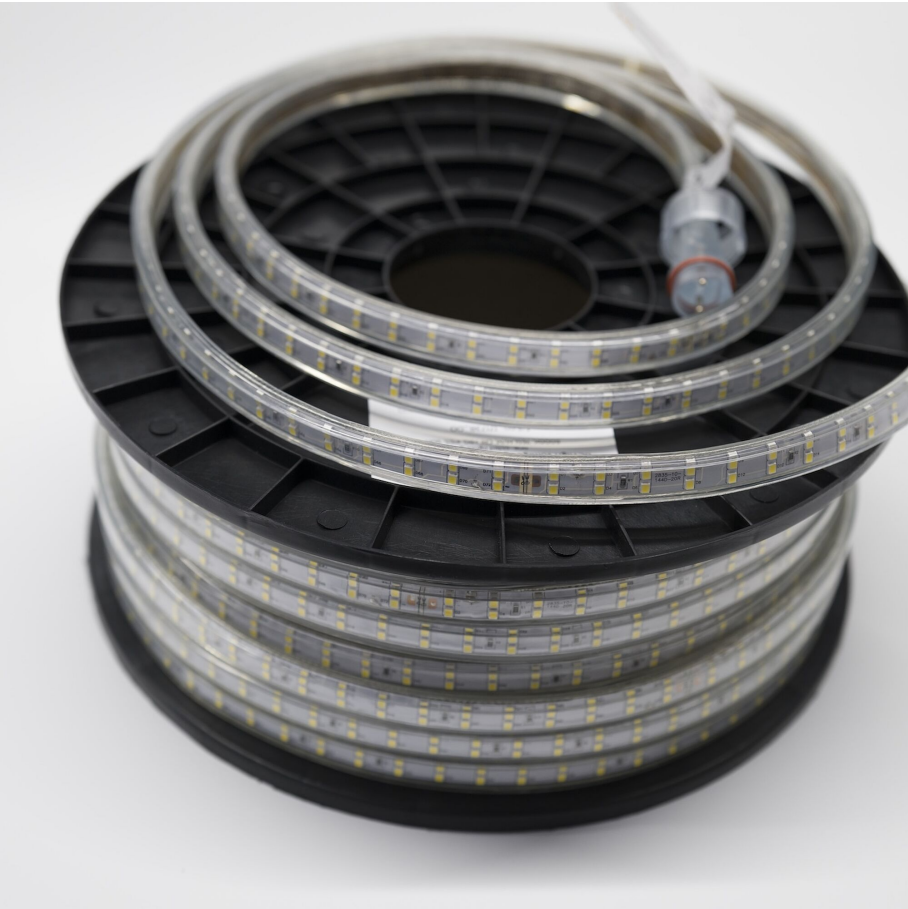


# BL HVS light tube one-sided on a reel

BL High Voltage LED lighth tube 765lm/m 230VAC 8W/m IP65 860 50m on reel  
Article no.: 171738



100000  
mm

Max. length

IP65

Degree of protection (IP)

6000  
K

Colour temperature

## TENDER TEXT

LED lighth tube High Voltage 765 lm/m single-sided lighting, 230VAC, 8W/m, 95.6 lm/W, IP65, CRI>80, 6000K, on a reel, 50 meter LED module BL HVS light tube one-sided on a reel Article 171738 LED light tube on a practical spool for easy and quick unwinding. Using T-connectors, several light strips can be connected over a total length of 100000 mm; Supply voltage 230 V; lamp power 8.0 W, luminous flux 765 lm; IP65 Protection type; color temperature 6000 K; Beam angle 120°; Dimensions light tube 15.0 mm x height 7 mm, on a spool; LEDs per meter 144 two rows, LED spacing 13.89 mm; Shock resistance IK07

## TOP-FEATURES

- //\_\_ Space-saving and efficiently stackable
- //\_\_ UV-resistant, flame retardant class V1-V0
- //\_\_ No external power supply required, connect directly to 230 V AC
- //\_\_ Daylight , homogeneous illumination over the entire length
- //\_\_ Using T-connectors, a length of up to 150 meters is possible



# BL HVS light tube one-sided on a reel

BL High Voltage LED light tube 765lm/m 230VAC 8W/m IP65 860 50m on reel

Article no.: 171738



## MECHANICAL DATA

Width [mm]	15.0
Length [mm]	50000.0
Height/depth [mm]	7
Mounting method	sonstige
Colour	White
Model	Schlauch
Type of control gear	nicht erforderlich
Self-adhesive	nein
Lamp type	LED nicht austauschbar
Impact strength	IK07
Distance [mm]	13.89
Distance relating to	LED zu LED
Degree of protection (IP)	IP65
With protective cover	yes
Length of particular segments [mm]	50000.0
Number of lamps per meter	144

## ELECTRICAL DATA

Protection class	II
Voltage type	AC
Lamp voltage [V]	230
Lamp power per meter [W]	8.0
Overall efficiency [lm/W]	96

## LIGHT TECHNICAL DATA

Beam angle [°]	120
Colour rendering index CRI	>80
Colour temperature [K]	6000
Colour of light	White
Luminous flux per meter [lm]	765
Energy efficiency class of the built-in lamp	F
Colour consistency (McAdam ellipse)	SDCM5

## CONNECTION

Number of poles	2
Max. length [mm]	100000

## TEMPERATURE TECHNICAL DATA

Ambient/storage temperature [°C]	- 20 ... + 60
Impact strength	IK07

# BL HVS light tube one-sided on a reel

**BL High Voltage LED light tube 765lm/m 230VAC 8W/m IP65 860 50m on reel**

Article no.: 171738



Ambient temperature during operating [°C]	- 20... + 45
---	--------------

Rated life time L70/B50 at 25 °C [h]	36000
--------------------------------------	-------

## PACKAGING INFORMATION

EAN	4250716946864
-----	---------------

Article no.	171738
-------------	--------

Net weight [g]	8200
----------------	------

Gross weight [g]	8200
------------------	------

Gross width [mm]	340.0
------------------	-------

Gross height [mm]	340.0
-------------------	-------

Gross length [mm]	145.0
-------------------	-------

Customs tariff number	94059900
-----------------------	----------

Net width [mm]	340.0
----------------	-------

Net height [mm]	340
-----------------	-----

Net length [mm]	145
-----------------	-----

State of origin	CN
-----------------	----

\* Information about the electrical and lighting technology measurements: Performance data measured after 1 min. at 25 °C ambient temperature and a light colour of 4,000 K (or RGB). These values can have a tolerance value of +/- 10% (or +/- 15 % at ECO / TWO / RGB / AIR ). Module length at 24 V input voltage at the module and luminous flux drop 10% over the specified length.

## NECESSARY ACCESSORIES

Article	Article no.
---------	-------------

Cable 800W for LED Light tube	171742
-------------------------------	--------

Cable 1500W for LED Light tube	171743
--------------------------------	--------

SAFETY INFORMATION: Read the safety and installation instructions carefully and completely before commissioning. The operating instructions can be found at: [www.better-light.at](http://www.better-light.at)

DISCLAIMER OF WARRANTY: The technical information corresponds to the status at the time of printing and have been worked out to the best of our knowledge. However, errors and printing errors are reserved. Make sure that you always use the latest version of the data sheets. The latest data sheet can be found at: [www.better-light.at](http://www.better-light.at)