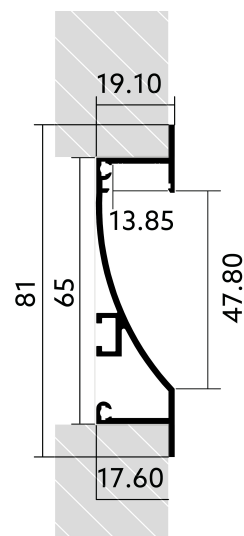
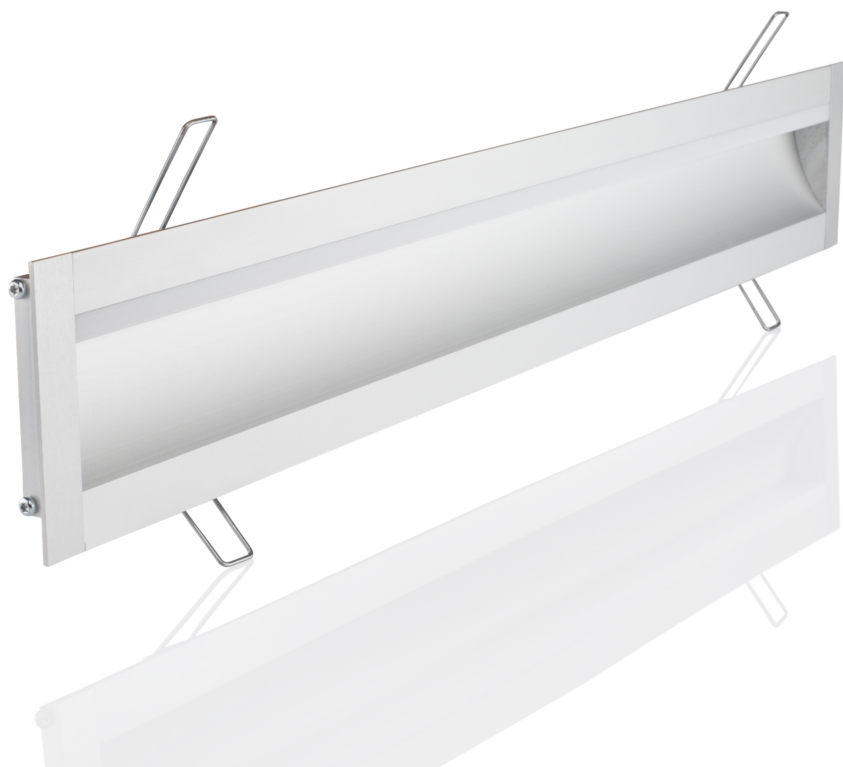


Niche profile YT08

BLPYT08030200008100191

Article no.: 170261



Material



Power consumption



Height



Width

TENDER TEXT

BL Profile YT08 Niche 30W/m L2000xB81xH19,1mm BILTON LEDON Technology Niche profile YT08 Article 170261 The Niche profile YT08 can be combined with all covers from the YT family. The profile is made of Aluminium with an finish and has a power consumption of up to 30 W. Dimensions (L x W x H): 2000.0 mm x 81.0 mm x 19.1 mm Please note that cutting tolerances of +/- 2mm may occur.

Niche profile YT08

BLPYT08030200008100191

Article no.: 170261



MECHANICAL DATA

Material	Aluminium
Width [mm]	81.0
Length [mm]	2000.0
Height [mm]	19.1
Mounting method	sonstige
Colour	lichtgrau
Power consumption [W]	30
Material quality	sonstige
Surfacetreatment	anodisiert / eloxiert

TEMPERATURE TECHNICAL DATA

Power consumption [W]	30
Thermal conductivity	23.4

PACKAGING INFORMATION

EAN	4250716912906
Article no.	170261
Net weight [g]	622
Gross weight [g]	622
Gross width [mm]	81.0
Gross height [mm]	19.1
Gross length [mm]	2000.0
Customs tariff number	76042990
Net width [mm]	81.0
Net height [mm]	19.1
Net length [mm]	2000
State of origin	DE

NECESSARY ACCESSORIES

Article	Article no.
Endcap YT008	170463
Spring steel YTC2	170467
Nut Connector YTV1	170471

SAFETY INFORMATION: Read the safety and installation instructions carefully and completely before commissioning. The operating instructions can be found at: www.better-light.at

DISCLAIMER OF WARRANTY: The technical information corresponds to the status at the time of printing and have been worked out to the best of our knowledge. However, errors and printing errors are reserved. Make sure that you always use the latest version of the data sheets. The latest data sheet can be found at: www.better-light.at